

20
23

SOFTBALL
CATALOG



AUGUSTA
SPORTSWEAR BRANDS

**S
O
F
T
B
A
L
L**





LINE UP

SOFTBALL JERSEY	4
SOFTBALL PANTS.....	26
OUTERWEAR	31
HEADWEAR	41
ACCESSORIES	45
BAGS	48
DECORATION	49

ICON KEY



Dry-Excel™

Moisture evaporation and wicking fabric



Water Resistant

Resists rain & water to keep the body protected & dry



Color Secure®

Color Secure® helps prevent dye migration



Moisture Management

Fabric wicks moisture away keeping the body cool & dry



4-Way Stretch

Stretch properties allow for increased mobility



Odor Resistant

Odor Resistant technology keeps garments fresher longer



UPF

Garment protects against harmful UV rays



Back

Lite Chevron



**LADIES FREESTYLE SUBLIMATED
FULL-BUTTON JERSEY**

R45VTX Ladies S-3XL MSRP 108.40
R45VTG Girls S-XL MSRP 107.40

- 92% polyester/8% spandex mesh
- Dri-Power® Moisture Wicking Technology
- Garment protects against the sun with 20+ UPF
- Tagless label
- Buttons spaced for easy embellishment
- Set-in sleeves
- Contoured bottom



Strikeout

746LGX
pg. 27



Shortstop



For available design lines visit
augustasportswear.com/sublimation



Slider



LADIES FREESTYLE SUBLIMATED
 FAUX FULL-BUTTON JERSEY

745VTX Ladies S-3XL MSRP 118.00

745VTG Girls S-XL MSRP 110.20

- 92% polyester/8% spandex engineered with ventilated stretch mesh for the ultimate combination of lightweight and breathability
- Garment protects against the sun with 20+ UPF
- Dri-Power® Moisture Wicking Technology
- Tagless label
- Faux full button jersey
- Buttons spaced for easy embellishment
- Set-in sleeves
- Fishtail bottom



Shortstop



Lite Chevron



SUM736
756VTX

P500
pg. 41



All Over
746LGX



Back

Breaking Ball
756S2X



COMING SOON

NEW

**LADIES FREESTYLE
SUBLIMATED TWO-BUTTON
PERFORMANCE MESH
JERSEY**

756VTX Ladies
S-3XL MSRP 87.20

- 92% polyester/8% spandex engineered with lightweight, breathable stretch fabric for comfort and mobility
- Garment protects against the sun with 15+ UPF
- Dri-Power® Moisture Wicking Technology
- Tagless label
- Outside locker label
- Set-in sleeves
- Contoured bottom

**LADIES FREESTYLE
SUBLIMATED TWO-BUTTON
JERSEY**

756S2X Ladies
S-3XL MSRP 80.60

- 91% polyester/9% spandex engineered with lightweight, breathable stretch fabric for comfort and mobility



For available design lines visit
augustasportswear.com/sublimation



6223
 pg. 44



Stars & Stripes



LADIES FREESTYLE SUBLIMATED
 TWO-BUTTON JERSEY

228332 Ladies S-3XL MSRP 64.60

228432 Girls S-XL MSRP 63.60

- Dry-Excel™ 100% polyester wicking smooth knit
- Garment protects against the sun with 50+ UPF
- Tagless label
- Raglan sleeves
- Contoured bottom



Stinger



Fast Pitch



P500
pg. 41



Back

Fully
Reversible

Stinger



**LADIES FREESTYLE SUBLIMATED
LIGHTWEIGHT REVERSIBLE V-NECK
JERSEY**

228371 Ladies S-3XL MSRP 66.00

- 5.2 ounce, lightweight 96% polyester/4% spandex single-ply reversible knit
- Garment protects against the sun with 50+ UPF
- Outside locker label
- Set-in sleeves

Fully
Reversible



A-Stripe

Fully
Reversible



Fast Pitch



746LGX
pg. 27





For available design lines visit
augustasportswear.com/sublimation



598V
 pg. 42



A-Stripe



Fully Reversible



LADIES FREESTYLE SUBLIMATED REVERSIBLE V-NECK JERSEY

228334 Ladies S-3XL MSRP 66.60

- Dry-Excel™ 100% polyester single ply reversible closed hole mesh
- Garment protects against the sun with 50+ UPF
- Tear away label
- Set-in sleeves



Stinger



Fast Pitch

Slider
7D6S2X



7S4DBX
pg. 29



Grand Slam



Breaking Ball



**FREESTYLE SUBLIMATED
SLEEVELESS JERSEY**

7D6S2X Ladies S-3XL MSRP 66.00

- 91% polyester/9% spandex engineered with lightweight, breathable stretch fabric for comfort and mobility
- Garment protects against the sun with 15+ UPF
- Dri-Power® Moisture Wicking Technology
- Tagless label
- Scooped neck



For available design lines visit
augustasportswear.com/sublimation



P500
 pg. 41

Cycle
 7D7VTX

Cycle
 346LGX
 pg.26



Clubhouse
 7D7S2X

738LGX
 pg. 29



Back



COMING SOON

NEW

LADIES FREESTYLE SUBLIMATED
 V-NECK PERFORMANCE MESH
 JERSEY

7D7VTX Ladies S-3XL MSRP 81.00

- 92% polyester/8% spandex engineered with lightweight, breathable stretch fabric for comfort and mobility
- Garment protects against the sun with 15+ UPF
- Dri-Power® Moisture Wicking Technology
- Tagless label
- Outside locker label
- Raglan cap sleeves

LADIES FREESTYLE SUBLIMATED
 V-NECK JERSEY

7D7S2X Ladies S-3XL MSRP 75.00

- 91% polyester/9% spandex engineered with lightweight, breathable stretch fabric for comfort and mobility



LADIES FREESTYLE SUBLIMATED
PIN-DOT SLEEVELESS JERSEY

228354 Ladies S-3XL MSRP 56.00
228454 Girls S-XL MSRP 55.00

- Dry-Excel™ polyester Pin-Dot wicking mesh
- 100% polyester pinhole mesh back
- Garment protects against the sun with 50+ UPF
- Racerback styling
- Contoured bottom

A-Stripe



Classic
Color
Block

A Stripe



Classic
Color
Block



LADIES FREESTYLE SUBLIMATED
SHORT SLEEVE PIN-DOT JERSEY

228350 Ladies S-3XL MSRP 65.00
228450 Girls S-XL MSRP 64.00

- Dry-Excel™ polyester Pin-Dot wicking mesh
- 100% polyester pinhole mesh back
- Garment protects against the sun with 50+ UPF
- Set-in sleeves
- Contoured bottom



LADIES FREESTYLE SUBLIMATED SHORTS

228355 Ladies S-3XL MSRP 59.00
228455 Girls S-XL MSRP 58.00

- Dry-Excel™ polyester Pin-Dot wicking mesh
- Garment protects against the sun with 50+ UPF
- Covered elastic waistband with inside drawcord

Fast Pitch



Classic
Color
Block



LADIES FREESTYLE SUBLIMATED
LIGHTWEIGHT JERSEY

228335 Ladies S-3XL MSRP 58.00
228435 Girls S-XL MSRP 57.00

- Dry-Excel™ 100% polyester smooth wicking knit body
- 100% polyester pinhole mesh back
- Garment protects against the sun with 50+ UPF
- Tagless label
- Set-in sleeves



LADIES FREESTYLE SUBLIMATED
LIGHTWEIGHT SHORTS

228336 Ladies S-3XL MSRP 51.40
228436 Girls S-XL MSRP 50.40

- Dry-Excel™ 100% polyester smooth wicking knit body
- Garment protects against the sun with 50+ UPF
- Covered elastic waistband with inside drawcord



For available design lines visit
augustasportswear.com/sublimation



COORDINATING ADULT 343VTM

LADIES STRETCH FAUX BUTTON JERSEY

737VTX Ladies S-2XL MSRP 51.70

- 92% nylon/8% spandex (color)
- 92% polyester/8% spandex (white)
- Dri-Power® Moisture Wicking Technology
- Tagless label
- Faux full button jersey
- Buttons spaced for easy embellishment
- Back panel wraps to front with no side seam
- Raglan sleeve with modified sleeve length



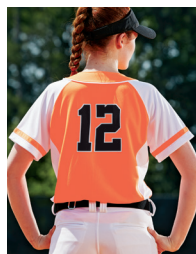
Fishtail bottom



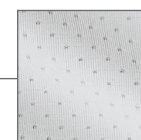
LADIES WINNER JERSEY

1665 Ladies S-3XL MSRP 36.80

- 100% polyester propelit micromesh wicking knit body
- 92% polyester/8% spandex wicking pinhole mesh side panels
- Tagless label
- Faux full button jersey
- Buttons spaced for easy embellishment
- Raglan sleeves
- Fishtail bottom



Back



Pinhole Mesh Insert



6261
pg. 43



1241
pg. 30

CUTTER+ COLLECTION



COORDINATING ADULT/YOUTH
6909 | 6910



Back



COMING SOON

NEW

LADIES CUTTER+ FULL BUTTON JERSEY

6919	Ladies	XS-2XL	MSRP 30.00
6920	Girls	S-L	MSRP 29.00

- 96% polyester/4% spandex lightweight knit with color secure® technology that helps prevent dye migration
- Garment protects against the sun with 50+ UPF
- Micro-Interlock smooth 100% polyester knit side inserts
- Tear away label
- Buttons spaced for easy embellishment
- Set-in sleeves
- Dropped tail



BLACK/
WHITE
420

COLUMBIA BLUE/
WHITE
293

NAVY/
WHITE
301

PURPLE/
WHITE
450



ROYAL/
WHITE
280

SCARLET/
WHITE
408

WHITE
005



7S4DBX
pg. 29

COORDINATING ADULT/YOUTH
3R6X2M | 3R6X2B



LADIES PERFORMANCE
TWO-BUTTON COLOR BLOCK JERSEY

7R6X2X Ladies S-2XL MSRP 32.70

- 100% polyester
- Mesh inserts located in key areas of the jersey to allow for extra comfort and breathability
- Dri-Power® Moisture Wicking Technology
- Odor protection
- Tagless label
- Set-in sleeves
- Fishtail bottom



GOLD/
BASEBALL GREY
G9L

MAROON/
BASEBALL GREY
M9B

NAVY/
BASEBALL GREY
N9B

PURPLE/
BASEBALL GREY
P9B

ROYAL/
BASEBALL GREY
R9B

TRUE RED/
BASEBALL GREY
T9B



BURNT ORANGE/
BASEBALL GREY
B9O

BLACK/
BASEBALL GREY
B9A

CARDINAL/
BASEBALL GREY
C9A

COLUMBIA BLUE/
BASEBALL GREY
C9C

DARK GREEN/
BASEBALL GREY
D9B

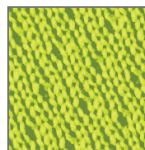


LADIES OVERPOWER
TWO-BUTTON JERSEY



1670 Ladies S-2XL MSRP 29.40

- 100% polyester propelit micromesh wicking knit
- Tagless label
- Raglan sleeves



Propelit Mesh



BLACK/
WHITE
420

LIME/
WHITE
693

NAVY/
WHITE
301

ORANGE/
WHITE
320

POWER
BLUE/
WHITE
834



POWER
PINK/
WHITE
468

POWER
YELLOW/
WHITE
327

RED/
WHITE
400

ROYAL/
WHITE
280

WHITE/
SILVER
GREY
E64





6228
pg. 43



Back

COORDINATING
ADULT/YOUTH
6905 | 6906



COMING SOON

NEW

LADIES CUTTER+ HENLEY JERSEY

6917 Ladies XS-2XL MSRP 25.00
6918 Girls S-L MSRP 24.00

- 96% polyester/4% spandex lightweight knit with color secure® technology that helps prevent dye migration
- Garment protects against the sun with 50+ UPF
- Tear away label
- Raglan sleeves



BLACK/WHITE 420 COLUBIA BLUE/WHITE 293 DARK GREEN/WHITE 438 MAROON/WHITE 380 NAVY/WHITE 301



PURPLE/WHITE 450 ROYAL/WHITE 280 SCARLET/WHITE 408 TEAL/WHITE 331 VEGAS GOLD/WHITE 250



WHITE/BLACK 226 WHITE/GRAPHITE 751 WHITE/NAVY 221 WHITE/ROYAL 220 WHITE/SCARLET 235



WHITE/SILVER E64



1298
pg. 29

COORDINATING ADULT/YOUTH

1557 | 1558

LADIES POWER PLUS
JERSEY 2.0



1559 Ladies XS-2XL MSRP 22.20

- 100% polyester wicking smooth knit with color secure® technology that helps prevent dye migration
- Tagless label
- Modified raglan sleeves
- Longer length



Back



COORDINATING
ADULT/YOUTH

1565 | 1566

ATTAIN
COLLECTION



LADIES ATTAIN
TWO-BUTTON JERSEY



1567 Ladies XS-3XL MSRP 14.80

- 100% polyester wicking knit with color secure® technology that helps prevent dye migration
- Tear away label
- Raglan sleeves
- Longer length



6701
pg. 46



6227
pg. 43

6701
pg. 46



7S4DBX
pg. 29



Back

LADIES CLASSIC V-NECK JERSEY



- 100% polyester double knit with color secure® technology that helps prevent dye migration
- Dri-Power® Moisture Wicking Technology
- Tagless label
- Outside locker label
- Raglan sleeves
- Contoured bottom

R01X3X Ladies
S-2XL MSRP 31.80

COORDINATING ADULT/YOUTH

R01X3M | R01X3B



AQUA/
BLACK/
WHITE
09R

BURNT
ORANGE/
BLACK/
WHITE
07R

COLUMBIA
BLUE/
NAVY/
WHITE
614

DARK
GREEN/
GOLD/
WHITE
430

GOLD/
BLACK/
WHITE
249

MAROON/
STEEL/
WHITE
08R

NAVY/
TRUE RED/
WHITE
04R

NAVY/
STEEL/
WHITE
06R

PURPLE/
BLACK/
WHITE
497

TRUE RED/
ROYAL/
WHITE
05R

WHITE/
TRUE RED/
WHITE
03R

WHITE/
NAVY/
TRUE RED
10R

WHITE/
BLACK/
WHITE
132

WHITE/
ROYAL/
WHITE
137



Front



LADIES FULL FORCE JERSEY

1682	Ladies	S-2XL	MSRP 28.40
1683	Girls	S-L	MSRP 27.40

- 100% polyester propelit micromesh wicking knit
- Tagless label
- Double layer V-neck collar
- Set-in sleeves



BLACK/
WHITE
420

DARK GREEN/
WHITE
438

MAROON/
WHITE
380

NAVY/
WHITE
301



PURPLE/
WHITE
450

ROYAL/
WHITE
280

SCARLET/
WHITE
408

WHITE/
GRAPHITE
751



Back

COORDINATING
ADULT/YOUTH
6907 | 6908



P500
pg. 41



COMING SOON

NEW

LADIES CUTTER+ V-NECK JERSEY

6915 Ladies XS-2XL MSRP 20.00
6916 Girls S-L MSRP 19.00

- 96% polyester/4% spandex lightweight knit with color secure® technology that helps prevent dye migration
- Garment protects against the sun with 50+ UPF
- Tear away label
- Raglan sleeves



R15LSX
pg. 28



6701
pg. 46



Available in Girls

COORDINATING ADULT/YOUTH

1517 | 1518



LADIES CUTTER JERSEY

1522	Ladies	S-2XL	MSRP 16.40
1523	Girls	S-L	MSRP 15.40

- 100% polyester wicking knit with color secure® technology that helps prevent dye migration
- 92% polyester/8% spandex wicking pinhole mesh underarms
- Tagless label
- Raglan sleeves
- Contoured bottom





LADIES PARAGON JERSEY

1676 Ladies S-3XL MSRP 26.40
1677 Girls S-L MSRP 25.40

- 100% polyester wicking smooth knit with color secure® technology that helps prevent dye migration
- 100% polyester propelit micromesh wicking knit inserts
- Tagless label



BLACK/WHITE/SILVER GREY 674
 COLUMBIA BLUE/NAVY/WHITE 614
 DARK GREEN/WHITE/SILVER GREY 671
 LIME/WHITE/BLACK 652
 MAROON/WHITE/SILVER GREY 670
 NAVY/RED/WHITE 518
 NAVY/WHITE/SILVER GREY 672



ORANGE/WHITE/SILVER GREY 686
 POWER PINK/WHITE/BLACK 455
 PURPLE/WHITE/SILVER GREY 691
 RED/BLACK/WHITE 110
 ROYAL/RED/WHITE 115
 WHITE/BLACK/WHITE 132



6227
pg. 43



Back

1297
pg. 29



LADIES DYNAMITE JERSEY

312162 Ladies S-2XL MSRP 26.80
312163 Girls S-L MSRP 25.80

- 92% polyester/8% spandex wicking pinhole mesh
- Tagless label



ATHLETIC GOLD/BLACK/WHITE 657
 BLACK/BLACK/WHITE 529
 COL BLUE/BLACK/WHITE 519
 FOREST/BLACK/WHITE 148
 LIME/BLACK/WHITE 680
 MAROON/BLACK/WHITE 524
 NAVY/SILVER GREY/WHITE 515

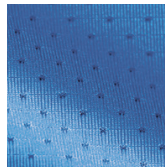


ORANGE/BLACK/WHITE 322
 PURPLE/BLACK/WHITE 497
 RASPBERRY/BLACK/WHITE 593
 ROYAL/BLACK/WHITE 526
 SCARLET/BLACK/WHITE 952
 TEAL/BLACK/WHITE 332
 WHITE/BLACK/WHITE 132



Back





Pinhole mesh



LADIES TORNADO JERSEY

1355 Ladies S-2XL MSRP 25.80

1356 Girls S-L MSRP 24.80

- 92% polyester/8% spandex wicking pinhole mesh
- Tagless label



BLACK/ GOLD/ WHITE 418	COL. BLUE/ NAVY/ WHITE 614	LIME/ BLACK/ WHITE 680	NAVY/ GOLD/ WHITE 516	ORANGE/ BLACK/ WHITE 322	POWER PINK/ BLACK/ WHITE 456
---------------------------------	-------------------------------------	---------------------------------	--------------------------------	-----------------------------------	---------------------------------------



PURPLE/ GOLD/ WHITE 615	POWER YELLOW/ BLACK/ WHITE 458	RED/ BLACK/ WHITE 110	ROYAL/ RED/ WHITE 115	WHITE/ BLACK/ WHITE 132
----------------------------------	--	--------------------------------	--------------------------------	----------------------------------



NEW GIRLS SIZE XS

LADIES SLEEVELESS ATTAIN JERSEY

4794 Ladies S-2XL MSRP 10.20

4795 Girls XS-L MSRP 9.20

- 100% polyester wicking knit with color secure® technology that helps prevent dye migration
- Tear away label



NAVY 065	BLACK 080	COLUMBIA BLUE 089	SILVER 099	MAROON 745
-------------	--------------	-------------------------	---------------	---------------



PURPLE 747	ELECTRIC PINK 80N	RED 040	ROYAL 060	WHITE 005
---------------	-------------------------	------------	--------------	--------------



GOLD 025	ORANGE 029	DARK GREEN 035
-------------	---------------	----------------------



ATTAIN COLLECTION





6226
pg. 44



Back



COMING SOON

NEW

LADIES CUTTER+
SLEEVELESS JERSEY

6913 Ladies XS-2XL MSRP 22.00
6914 Girls S-L MSRP 21.00

- 96% polyester/4% spandex lightweight knit with color secure® technology that helps prevent dye migration
- Garment protects against the sun with 50+ UPF
- Tear away label
- Contoured bottom



BLACK/
WHITE
420

COLUMBIA BLUE/
WHITE
293

DARK GREEN/
WHITE
438



GRAPHITE/
WHITE
R04

NAVY/
WHITE
301

PURPLE/
WHITE
450



ROYAL/
WHITE
280

SCARLET/
WHITE
408

TEAL/
WHITE
331

WHITE
005



1298
pg. 29

6701
pg. 46



Back



LADIES ROVER JERSEY

1687 Ladies S-2XL MSRP 25.00
1688 Girls S-L MSRP 24.00

- 100% polyester wicking smooth knit with color secure® technology on front and back panels that helps prevent dye migration
- 90% polyester/10% spandex wicking mesh back yoke and side inserts with color secure® technology
- Tagless label



BLACK/WHITE 420
COLUMBIA BLUE/WHITE 293
DARK GREEN/WHITE 438
GRAPHITE/WHITE R04
MAROON/WHITE 380



NAVY/WHITE 301
ORANGE/WHITE 320
POWER PINK/WHITE 468
PURPLE/WHITE 450
ROYAL/WHITE 280



SCARLET/BLACK 406
SCARLET/WHITE 408
SILVER/WHITE 254
TEAL/WHITE 331
WHITE 005



Pinhole mesh



COORDINATING ADULT/YOUTH

1420 | 1421

LADIES INFERNO SHORTS



1292 Ladies S-2XL MSRP 20.20
1293 Girls S-L MSRP 19.20

- 92% polyester/8% spandex wicking pinhole mesh
- Tagless label
- Covered elastic waistband with inside drawcord
- 5-inch inseam
- Girls inseam graded



BLACK 080
RED 040
ROYAL 060
COLUMBIA BLUE 089
NAVY 065



ORANGE 029
LIME 096
GRAPHITE 059
POWER YELLOW 810
POWER PINK 809

LADIES OCTANE SHORTS



1423 Ladies S-2XL MSRP 8.40

- 100% polyester wicking knit
- Tagless label
- Covered elastic waistband with inside drawcord
- 7-inch inseam



BLACK 080
DARK GREEN 035
GRAPHITE 059
LIME 096
MAROON 045*
NAVY 065



POWER PINK 809
PURPLE 050*
RED 040
ROYAL 060
SILVER 099

*Maroon & Purple shades can vary by brand, please contact our Customer Care with questions.



P500
pg. 41



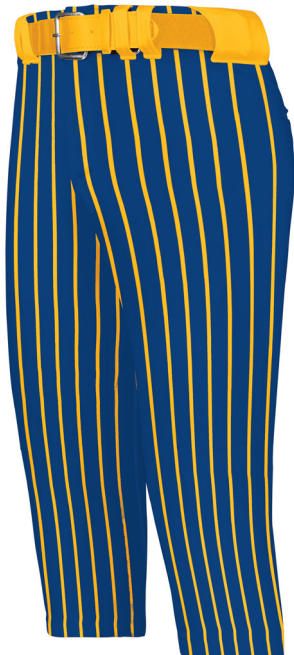
COMING SOON

NEW

**LADIES FREESTYLE SUBLIMATED
SOFTBALL KNICKER**

228372	Ladies	XS-3XL	MSRP 77.00
228472	Girls	S-XL	MSRP 76.00

- 100% wicking polyester double-knit
- Wicking stain release properties
- Silicone knitted elastic waistband with tunnel belt loops
- Two-snap closure
- Zipper fly
- Two set-in double welt back pockets with button closure
- Reinforced knees
- Elastic cuffs



Pin Stripe



Windmill

228350
pg. 11

Windmill



For available design lines visit
augustasportswear.com/sublimation



Back

LADIES FREESTYLE
 SUBLIMATED KNICKER

746LGX Ladies S-3XL MSRP 85.00
746LGG Girls S-XL MSRP 84.00

- 12 ounce 100% polyester stretch double knit
- Branded silicone knitted elastic waistband with tunnel belt loops
- Two-snap closure
- Zipper fly
- Two set-in double welt back pockets with button closure
- Reinforced knees
- Elastic cuffs



Lite Chevron

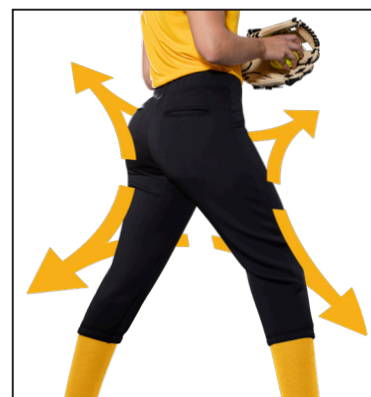


Fast Pitch

228371
 pg. 8



Stinger



4-Way stretch properties allow for increased mobility

FLEXSTRETCH



LADIES FLEXSTRETCH PANT

R15LSX	Ladies	XS-2XL	MSRP 47.80
R15LSG	Girls	S-L	MSRP 46.80

- 13 ounce 87% polyester/13% spandex wicking knit with stain release
- Yoga pant fit
- Elastic waistband with inside drawcord
- Two set-in double welt back pockets with button closure
- Reinforced knees
- Elastic cuffs

Yoga pant fit

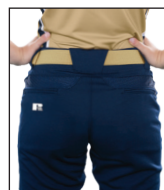


BASEBALL GREY BG7

BLACK BLK

STEALTH SHL

WHITE WHI



Back mesh yoke



LADIES LOW RISE
KNICKER LENGTH PANT

7S4DBX Ladies
XS-2XL MSRP 32.20
7S3DBG Girls
S-L MSRP 31.20

- 11 ounce, 100% polyester double knit
- Low rise, elastic waistband
- Tunnel belt loops
- Two-snap closure
- Zipper fly
- Two set-in welt back pockets (one on girls)
- Reinforced knees
- Knee length
- Elastic cuffs



BASEBALL GREY BG7
BLACK BLK
NAVY NAV
WHITE WHI



LADIES LOW RISE
DIAMOND FIT KNICKER

738LGX Ladies
XS-2XL MSRP 51.20

- 12 ounce, 100% polyester stretch double knit
- Tunnel belt loops
- Two-snap closure
- Zipper fly
- Low rise, stretch elastic waistband for better movement and silicone gripper to keep your jersey in
- Two set-in back pockets with zipper closure
- Mesh back yoke and crotch
- Knee length
- Elastic cuffs



BASEBALL GREY BG7
BLACK BLK
NAVY NAV
WHITE WHI



LADIES SLIDEFLEX
PANT



1297 Ladies
XS-3XL MSRP 42.00
1298 Girls
XS-L MSRP 41.00

- 16 ounce 100% polyester double knit
- Wicking stain release properties
- Mid rise, elastic waistband
- Tunnel belt loops
- Two-snap closure
- Zipper fly
- Two set-in double welt back pockets
- Reinforced knees
- Graded inseam
- Elastic cuffs



BLUE GREY 053
BLACK 080
GRAPHITE 059
NAVY 065
WHITE 005



LADIES LOW RISE HOMERUN PANT

1240 Ladies
XS-3XL MSRP 38.40
1241 Girls
S-L MSRP 36.40

- 14 ounce, 100% polyester double knit
- Low rise, elastic waistband with inside drawcord
- Tunnel belt loops
- Two-snap closure
- Zipper fly
- Two set-in double welt back pockets
- Graded inseam
- Reinforced knees
- Elastic cuffs



GAMER PULL-UP BASEBALL PANTS

NEW

6848 Adult S-XL MSRP 11.80
6849 Youth XXS-XL MSRP 10.80

- 12.7 ounce, 100% polyester double-knit
- Elastic waistband with inside drawcord
- Faux fly
- Right back welt pocket
- Reinforced double knees
- Retail ticketing matchbook
- Graded inseam
- Elastic cuffs



GAMER PULL-UP BASEBALL PANTS WITH LOOPS

NEW

6850 Adult S-XL MSRP 13.80
6851 Youth XXS-XL MSRP 12.80

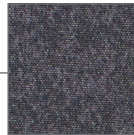
- 12.7 ounce, 100% polyester double-knit
- Elastic waistband with inside drawcord
- Tunnel belt loops
- Faux fly
- Right back welt pocket
- Reinforced double knees
- Retail ticketing matchbook
- Graded inseam
- Elastic cuffs

Available
in 3XL





RAIDER COLLECTION



Tech Print Pattern

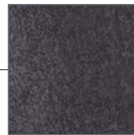
Sleeve pocket with silver media port & silicone welded zipper

Divided Front Pouch Pocket

Spandex-Bound Cuffs



1/4 zip neckline



Tech Print Pattern

Sleeve pocket with silver media port & silicone welded zipper

Divided Front Pouch Pocket



Warmth 2/10

Weight Ultra Light

RAIDER PULLOVER

229155 Adult XS-3XL MSRP 66.00
4XL in select colors

229655 Youth S-L MSRP 65.00
Select Colors

- Ultra-lightweight Aero-Tec™ fabric provides both weather protection and zero noise, without the bulk
- Set-in sleeves

Available in Adult 4XL & Youth



CARBON PRINT/
BLACK
H05

CARBON PRINT/
GRAPHITE
H60

CARBON PRINT/
NAVY
H03

CARBON PRINT/
ROYAL
H02

CARBON PRINT/
SCARLET
H01

Available in Adult Only



CARBON PRINT/
FOREST
H69

CARBON PRINT/
MAROON
H06

CARBON PRINT/
ORANGE
H07

CARBON PRINT/
PURPLE
H68

CARBON PRINT/
WHITE
H04



Warmth 2/10

Weight Ultra Light

RAIDER PULLOVER SHORT SLEEVE

229545 Adult S-3XL MSRP 60.60
4XL in select colors

- Ultra-lightweight Aero-Tec™ fabric provides both weather protection and zero noise, without the bulk
- Set-in sleeves

Available in Adult 4XL



CARBON PRINT/
BLACK
H05

CARBON PRINT/
NAVY
H03

CARBON PRINT/
ROYAL
H02

CARBON PRINT/
SCARLET
H01

CARBON PRINT/
WHITE
H04



CARBON PRINT/
FOREST
H69

CARBON PRINT/
GRAPHITE
H60

CARBON PRINT/
MAROON
H06

CARBON PRINT/
ORANGE
H07

CARBON PRINT/
PURPLE
H68



Ladies Fit

Side seam zipper for easy on/off



Embossed Pattern



Warmth 4/10

Weight Light

SERIESX PULLOVER

229533	Adult	XS-3XL	MSRP 59.60
		4XL in select colors	
229633	Youth	S-XL	MSRP 58.60
229733	Ladies	XS-2XL	MSRP 59.60

- Micron™ polyester is a lightweight, wind/water-resistant fabric
- Embossed inserts for subtle textured pattern
- Micromesh lined nylon body
- Taffeta lined sleeves
- Ladies' fit on 229733
- Set-in sleeves
- Front pockets
- Spandex bound cuffs
- Dropped tail with side vents
- Alternate pant: 229531 | 229631 | 229731, 229095

Available in 4XL, Ladies & Youth

Available in Adult & Ladies



BLACK 080

CARBON 096

WHITE 005



NAVY 065

ROYAL 060

SCARLET 083



BLACK/ ORANGE 423

BLACK/ SCARLET 500



CARDINAL 036

CARBON/ GOLD 43M

COLUMBIA BLUE 089

DARK GREEN 035

KELLY 030

MAROON 045

NAVY/ GOLD 302

NAVY/ SCARLET S20

PURPLE 050



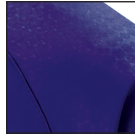
Warmth **5** / 10

Weight **Light**

BIONIC WINDSHIRT

229019 Adult S-3XL MSRP 60.20

- Micron™ polyester is a lightweight, wind/water resistant fabric
- Sleeves and arms are embossed with the Screenmesh print
- Jersey and taffeta lining for added warmth
- Raglan sleeves
- Front pockets
- Elastic cuffs
- Open bottom with adjustable elastic hidden drawcord
- Coordinating pants: 229531 | 229631 | 229731, 229095



Embossed pattern



BLACK/ LT GOLD R16 BLACK/ ORANGE 423 BLACK/ SCARLET 500 BLACK/ VEGAS GOLD 255 BLACK/ WHITE 420 CARBON/ BLACK E84 CARDINAL/ WHITE 409 DK GREEN/ WHITE 438 KELLY/ WHITE 340



MAROON/ WHITE 380 NAVY/ LT GOLD S28 NAVY/ SCARLET S20 NAVY/ VEGAS GOLD 256 NAVY/ WHITE 301 PURPLE/ WHITE 450 ROYAL/ LT GOLD S67 ROYAL/ WHITE 280 SCARLET/ WHITE 408



Warmth **2** / 10

Weight **Light**

SHORT SLEEVE PULLOVER

872RVM Adult S-3XL MSRP 52.20

872RVB Youth S-XL MSRP 51.20

- 100% polyester lightweight breathability fabric
- Dri-Power® Moisture Wicking Technology
- Raglan sleeves
- Adjustable bottom hem with hidden shockcord closure (on Adult only)

Colors Available in Youth



BLACK/ WHITE BWH NAVY/ WHITE NWH ROYAL/ WHITE ROW TRUE RED/ WHITE TRW WHITE/ STEALTH XDE





Back



Side zipper



Warmth **2** / 10 Weight **Ultra Light**

NEW

CLUBHOUSE PULLOVER

229595	Adult	S-3XL	MSRP 48.80
229695	Youth	S-XL	MSRP 47.80

- Areo-Tec 100% polyester
- Woven label
- Quarter zip pullover style with zipper garage
- Low profile collar
- Set-in sleeves
- Side seam pockets
- Spandex bound cuffs
- Side zipper for easy on/off



BLACK/
BLACK
425

BLACK/
ORANGE
423

BLACK/
WHITE
420

DARK GREEN/
WHITE
438

GRAPHITE/
WHITE
R04

NAVY/
NAVY
S14

NAVY/
SCARLET
S20

NAVY/
WHITE
301

ROYAL/
WHITE
280

SCARLET/
WHITE
408

WHITE/
GRAPHITE
751



Stretch mesh at center back for maximum mobility



Side seam zipper for easy on/off

Warmth **2** / 10

Weight **Ultra Light**

CLUBHOUSE SHORT SLEEVE PULLOVER

229581 Adult
S-4XL MSRP 44.80
5XL in select colors

229681 Youth
S-XL MSRP 43.80

- Areo-Tec 100% polyester
- Low profile collar
- Set-in sleeves
- Side seam pockets



ES474



229556

Available in 5XL



BLACK/
WHITE
420

GRAPHITE/
WHITE
R04

NAVY/
WHITE
301

WHITE/
GRAPHITE
751

ROYAL/
WHITE
280

SCARLET/
WHITE
408

DARK
GREEN/
WHITE
438

MAROON/
WHITE
380

BLACK/
ORANGE
423

NAVY/
SCARLET
S20



Jacket folds up into zippered front pocket



Warmth 4/10 Weight Light

RANGE PACKABLE PULLOVER

229554 Adult S-3XL MSRP 48.00
4XL in select colors

229654 Youth S-XL MSRP 47.00
Select Colors

- Tech weave printed Micron™ lightweight polyester, wind/water resistant fabric
- Adjustable 3 piece hood with eyelets and concealed cord locks on Adult only (elastic on youth)
- Raglan sleeves
- Half-elastic cuffs
- Adjustable bottom hem with hidden shockcord closure on right side of pocket (on Adult only)
- Coordinating pants: 229095

Available in Youth

Available in Adult 4XL



ROYAL 060

SCARLET 083

FOREST 038

MAROON 045



BLACK 080

NAVY 065

WHITE 005



Back



Warmth **6** / 10 Weight **Mid**

POTOMAC JACKET

229527	Adult	S-3XL	MSRP 82.40
229627	Youth	S-XL	MSRP 81.40

- Micro-Cord™ woven polyester fabric with a raised, ribbed texture
- Micromesh lined body and sleeves
- Concealed adjustable hood with eyelets and concealed cord locks stows when not in use
- Back vent with adjustable closure for full decoration access
- Front zippered pockets
- Dual inside pockets
- Rib-knit collar and cuffs
- Open bottom with adjustable elastic hidden drawcord (on Adult)
- Dropped tail
- Coordinating pants: 229056

Available in Youth



BLACK/WHITE 420

CARBON/WHITE F52

NAVY/WHITE 301



BLACK 080

CARBON J96

NAVY 065



BLACK/GOLD 421

BLACK/ORANGE 423

BLACK/SCARLET 500

DARK GREEN/WHITE 438

MAROON/WHITE 380

NAVY/GOLD 302

NAVY/SCARLET S20

ROYAL/WHITE 280

SCARLET/WHITE 408



Snap Front



Warmth **7** / 10

Weight **Heavy**

HERITAGE JACKET

229140 Adult S-4XL MSRP 77.80
5XL in select colors

- Duraweav™ fabric has a smooth oxford nylon surface
- Quilted nylon lining
- 15mm matte painted enamel snap front
- Set-in sleeves
- Front pockets
- Inside valuables pocket
- Rib-trim collar, cuffs, and bottom hem

Available in 4XL-5XL



BLACK/WHITE
420

NAVY/WHITE
301

ROYAL/WHITE
280

SCARLET/WHITE
408

BLACK
080

NAVY
065



BLACK/LT GOLD/
WHITE
R21

BLACK/SCARLET/
WHITE
R20

DARK GREEN/
LT GOLD/
WHITE
S06

MAROON/
WHITE
380

BLACK/
ORANGE/
WHITE
611

NAVY/
LT GOLD/
WHITE
S30



Warmth **5** / 10

Weight **Mid**

SATIN BASEBALL JACKET/STRIPED TRIM

3610 Adult XS-3XL MSRP 54.20

- Outer shell of 100% nylon satin
- Lined with 100% polyester brushed tricot
- Raglan sleeves
- Front pockets
- Rib-knit collar, cuffs and bottom



COLUMBIA
BLUE/
WHITE
293

LIGHT
PINK/
WHITE
465

METALLIC
GOLD/
WHITE
259

METALLIC
SILVER/
WHITE
260



BLACK/
WHITE
420

RED/
WHITE
400

ROYAL/
WHITE
280

NAVY/
WHITE
301



Back vent with decoration access



229582



229782



Zippered pocket on wearer's left sleeve



Hidden drawcord at waist on Ladies



Jacket folds into zippered pocket



Warmth **4** / 10 Weight **Light**

PACKABLE FULL ZIP JACKET

229582	Adult	S-4XL	MSRP 49.00
229782	Ladies	XS-3XL	MSRP 49.00

- Micron™ polyester is a lightweight, wind/water-resistant fabric
- Ladies' fit on style 229782
- Adjustable hood with inside concealed cord locks
- Reflective trim
- Back vent with adjustable closure for full decoration access
- Set-in sleeves
- Front zippered pockets
- Spandex bound cuffs
- Open bottom
- Adjustable elastic hidden drawcord at bottom hem (Adult only)



ATHLETIC GREY 009

BLACK 080

CARBON 096

DARK GREEN 035



MAROON 745

NAVY 065

OLIVE 039



PURPLE 747

ROYAL 060

SCARLET 063



Warmth **4** / 10

Weight **Light**

MICRO POLY WINDSHIRT/LINED

3415 Adult S-4XL MSRP 29.40

- Outer shell of 100% micro polyester
- Lined with 100% polyester taffeta
- Rib-knit V-neck collar, cuffs and bottom band
- Set-in sleeves
- Side seam pockets



BLACK 080

RED 040

ROYAL 060

NAVY 065

CORE
color choice

60/40 FLEECE HOODIE

5414 Adult S-5XL MSRP 32.80

5415 Youth S-L MSRP 31.80

- 9 ounce 60% cotton/40% polyester athletic fleece
- Tear away label
- Jersey lined hood with flat braid drawcord (on Adult only)
- Set-in sleeves
- Front pouch pocket
- Rib-knit cuffs and bottom band



CARBON HEATHER E83

BLACK 080

CARDINAL J36

CHARCOAL HEATHER 017

COLUMBIA BLUE 089

DARK GREEN 035

GOLD 025



GRAPHITE 059

KELLY 030

LIME 096

MAROON 045

NAVY 065

ORANGE 029

POWER BLUE 812



POWER PINK 809

POWER YELLOW 810

PURPLE 050

RED 040

ROYAL 060

VEGAS GOLD 023

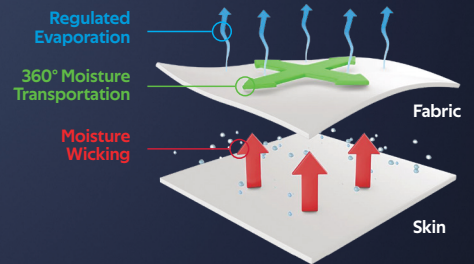
WHITE 005



Coolcore® is engineered to distribute moisture quickly throughout the garment.

As the moisture spreads it dries faster to keep you cool and comfortable.

Patented Fabric Technology



228371
pg. 8



PERFORATED COOLCORE® VISOR

P500 Adult One Size MSRP 17.00

- 96% polyester/4% spandex tech twill
- Mesh sweatband with Coolcore® technology
- 2-inch crown
- Curved visor
- Contrast color undervisor
- Hook-and-loop adjustable
- Perforated side panels with contrast color underlay



Back





Back

**LITE SERIES ALL-SPORT
ACTIVE VISOR**

510V Adult One Size MSRP 15.40

- 100% polyester lightweight "Ghost" performance fabric
- 2-inch crown
- Curved visor
- Gray undervisor
- Hook-and-loop adjustable



Back



**M2 PERFORMANCE
HOOK-AND-LOOP VISOR**

598V Adult One Size MSRP 15.20

- M2 Performance
- Stain-resistant
- 2-inch crown
- Curved visor
- Self-material undervisor
- Pro-stitched finish
- Hook-and-loop adjustable





ADJUSTABLE WICKING MESH TWO-COLOR VISOR

6260 Adult One Size MSRP 11.00
6261 Youth One Size MSRP 11.00

- 100% polyester
- Curved visor
- Hook-and-loop adjustable



ATHLETIC MESH VISOR

6227 Adult One Size MSRP 8.40
6228 Youth One Size MSRP 8.40

- 100% polyester athletic mesh with tricot backing
- Curved visor
- Sweatband folds down for easy embellishment
- Hook-and-loop adjustable



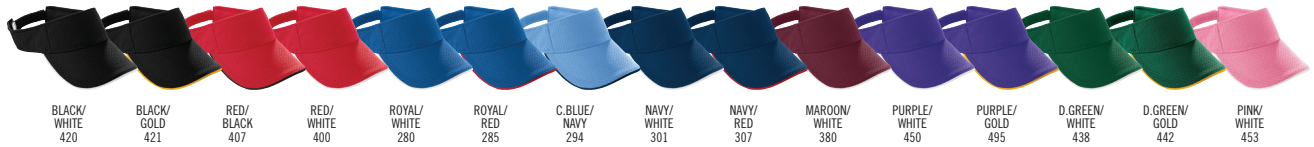


**ATHLETIC MESH
TWO-COLOR VISOR**

6223 Adult One Size MSRP 8.40
6224 Youth One Size MSRP 8.40

- 100% polyester athletic mesh with tricot backing
- Curved visor
- Sweatband folds down for easy embellishment
- Hook-and-loop adjustable

Only available
in Youth



SPORT TWILL VISOR

6225 Adult One Size MSRP 8.00
6226 Youth One Size MSRP 8.00

- 100% cotton twill
- Curved visor
- Sweatband folds down for easy embellishment
- Hook-and-loop adjustable



Mini Chevron



Water Color
Camo



NEW

FREESTYLE SUBLIMATED HEADBAND WITH TIE

228015 One Size MSRP 16.40

- Dry-Excel™ 84% polyester/16% spandex single-ply knit
- Adjustable lightweight head tie for a personalized fit
- 4" front, 1.5" back
- Sold in minimum packs of 12 pc per color



Spike



Marble



NEW

FREESTYLE SUBLIMATED HEADBAND

228016 One Size MSRP 18.40

- Dry-Excel™ 84% polyester/16% spandex single-ply knit
- 4" front, 1.5" back
- Sold in minimum packs of 12 pc per color



For available design lines visit
augustasportswear.com/sublimation



ZOOM TIE BACK HEADBAND

223846 2" x 34" MSRP 14.20

- Dry-Excel™ 86% polyester/14% spandex knit
- Adjustable lightweight head tie for a personalized fit



CHEER HAIR BOW

6701 One Size MSRP 11.40

- Solid grosgrain bow
- Decoratable grosgrain ribbon
- 3" x 7.5" with 5.5" tail
- 1" elastic hairband





ELITE MULTI-SPORT SOCK

6006 Large (10-13) MSRP 10.20
 Medium (9-11)
 Small (7-9)

- 75% acrylic/15% polyester/4% spandex/4% elastic/2% nylon
- Knee length
- Lightweight microfiber yarns offer support while remaining soft to the touch



WICKING ATHLETIC SOCK

6085 Large (10-13) MSRP 10.40
 Medium (9-11)
 Small (7-9)

- 70% lucool wicking polyester/13% nylon/12% elastic/5% spandex
- Knee-length tube sock

GAME SOCK

6020 Large (10-13) MSRP 7.00
 Medium (9-11)
 Small (7-9)

- 91% nylon/5% polyester/4% elastic
- Tube sock, slightly below the knee





3 compartments with double zippers

Two bat holders at sides with dual elastic drawcord and cordlocks

Expandable separate zippered lower compartment



BLACK
080

EXPANDABLE BAT BACKPACK

411 13"W x 25"H x 10"D MSRP 39.00

- 600-denier polyester with PVC coating
- Ventilated zippered main compartment with two zipper pulls
- Metal fence hooks
- Zippered front compartment with two zipper pulls
- Zippered inside pocket
- Padded back for support and comfort
- Padded shoulder straps with adjustable side tabs
- Web handle at top of backpack
- Durable vinyl on bottom of backpack to retain shape
- Bottom board attached to inside



With mesh ball holder



Reinforced multiuse side pockets with pass-thru strap for bat or lacrosse stick

Mesh ball holder fits volleyball, soccer or basketballs, & stashes away when not in use

ALL SPORT BACKPACK



327890 12"W x 18.5"H x 7"D MSRP 42.40

- 100% polyester heavy denier
- Large main interior compartment
- Front zipper pocket with deep, interior pouch holds shoes or accessories
- Side pouch pockets for water bottle with pass-thru for lacrosse stick or bat



BLACK/
GRAPHITE/
BLACK
Q92

GRAPHITE/
GRAPHITE/
BLACK
Q93

FOREST/
GRAPHITE/
BLACK
Q98



MAROON/
GRAPHITE/
BLACK
Q89

NAVY/
GRAPHITE/
BLACK
Q93

ORANGE/
GRAPHITE/
BLACK
Q90



PURPLE/
GRAPHITE/
BLACK
Q91

ROYAL/
GRAPHITE/
BLACK
Q84

SCARLET/
GRAPHITE/
BLACK
Q86



Screen Print



3D Embroidery



Applique



Embroidery



Tonal Etch



flexstyle



Heat Transfer



Sublimated Patch



Flat Embroidery



Heat Transfer



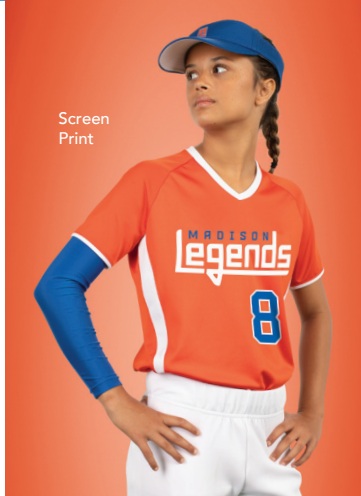
Genuine Leather Patch



Embroidery

WE HAVE THE TECHNIQUES FOR YOUR CUSTOMIZATION & DECORATION

For our full list of decoration techniques, pricing & access to our complete library of stock templates for both apparel & headwear, visit augustasportswear.com/decoration



Screen Print



Faux Leather Patch

ASB

WHERE TEAMS COME TOGETHER

